

# Locating urban hot-spots with mobile on-line size-resolved nanoparticle measurement



Michal Vojtisek-Lom<sup>1,2</sup>, Martin Pechout<sup>1</sup>, Martin Mazač<sup>1</sup>, Luboš Dittrich<sup>1</sup>, Jitka Štolcpartová<sup>3</sup>

<sup>1</sup> Institute for Automobile, Combustion Engine and Railway Engineering, Czech Technical University in Prague

<sup>2</sup> Department of Vehicles and Engines, Faculty of Mechanical Engineering, Technical University of Liberec

<sup>3</sup> Institute of Experimental Medicine, Academy of Sciences of the Czech Republic

Contact: michal.vojtisek@fs.cvut.cz, tel. (+420) 774 262 854



## Background

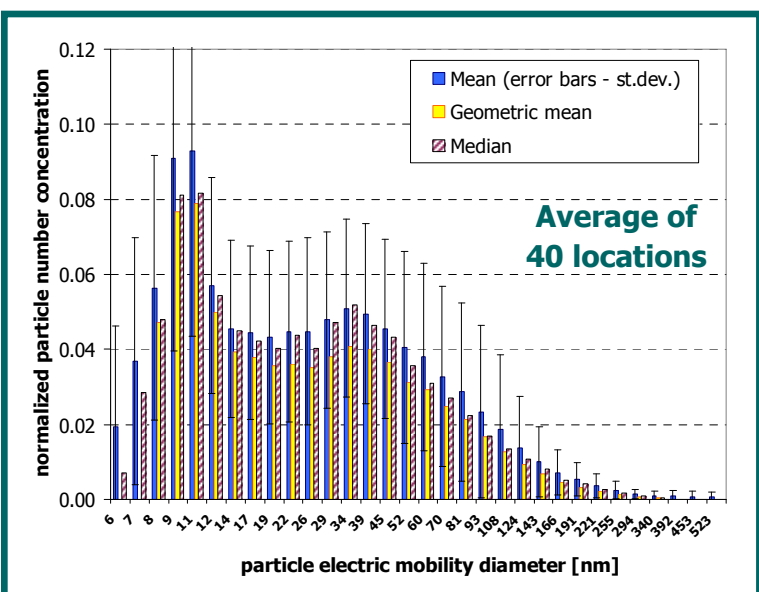
- Internal combustion engines are often a dominant sources of fine particles in urban air, which cause an order of magnitude more premature deaths than traffic accidents. Particles are very small, are emitted in the immediate vicinity of people.
- Nanoparticles concentrate along roads and their spatial distribution of nanoparticles is highly non-uniform.
- **Emissions of nanoparticles from internal combustion engines are strongly dependent on current and prior engine operating conditions and their distribution is therefore highly non-uniform.**

**Goal: Compact, mobile, size-resolved measurement of nanoparticles in ambient air near roadways.**

## Approach

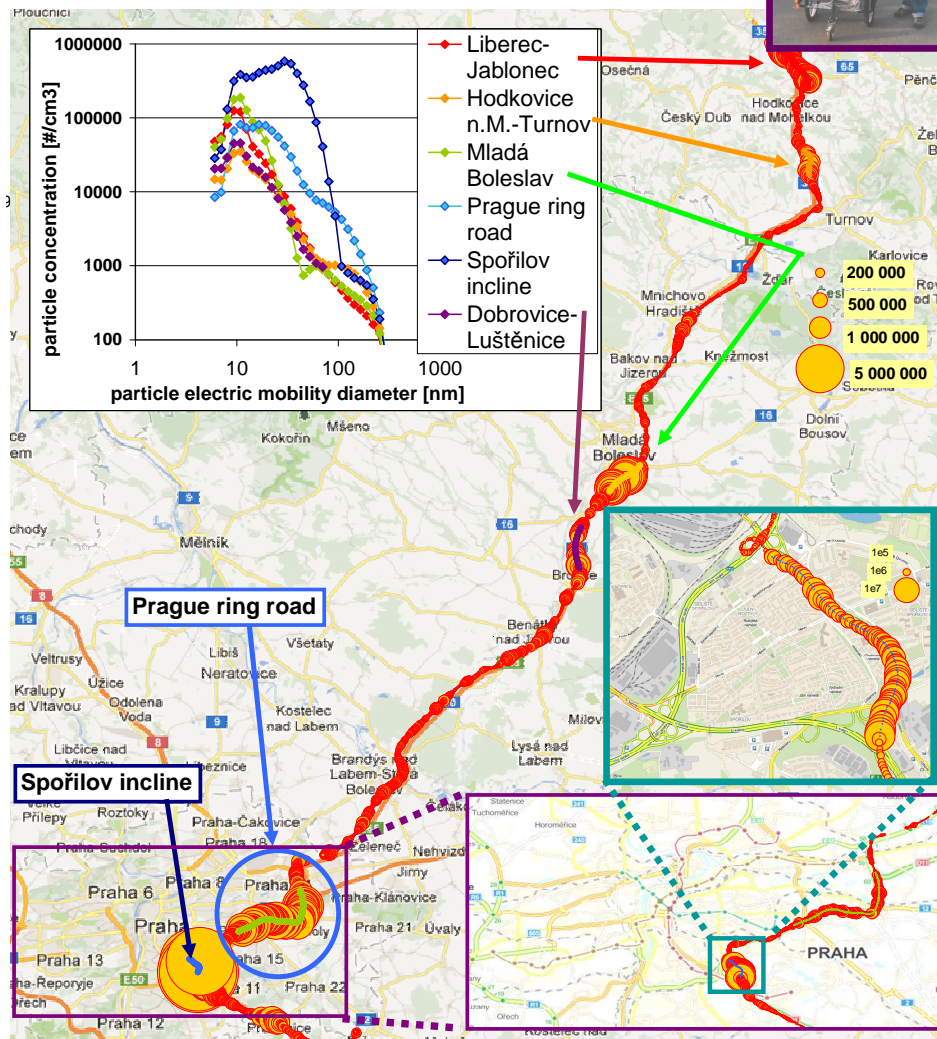
- Fast mobility spectrometer (Engine Exhaust Particle Sizer, TSI Inc.), condensation counter (P-trak, TSI Inc.), notebook, GPS, batteries mounted on a two-wheel hand cart.

**Size: Large peaks found around 10 nm**  
 -- can be missed if measurements start around 15-20 nm (UFP studies) or 23 nm (PMP)  
**Size distribution corresponds to, i.e., diesel exhaust after thermodenuder**  
 (Rönkkö et al., Environ. Sci. Technol., 2013, 47, 11882-11889)



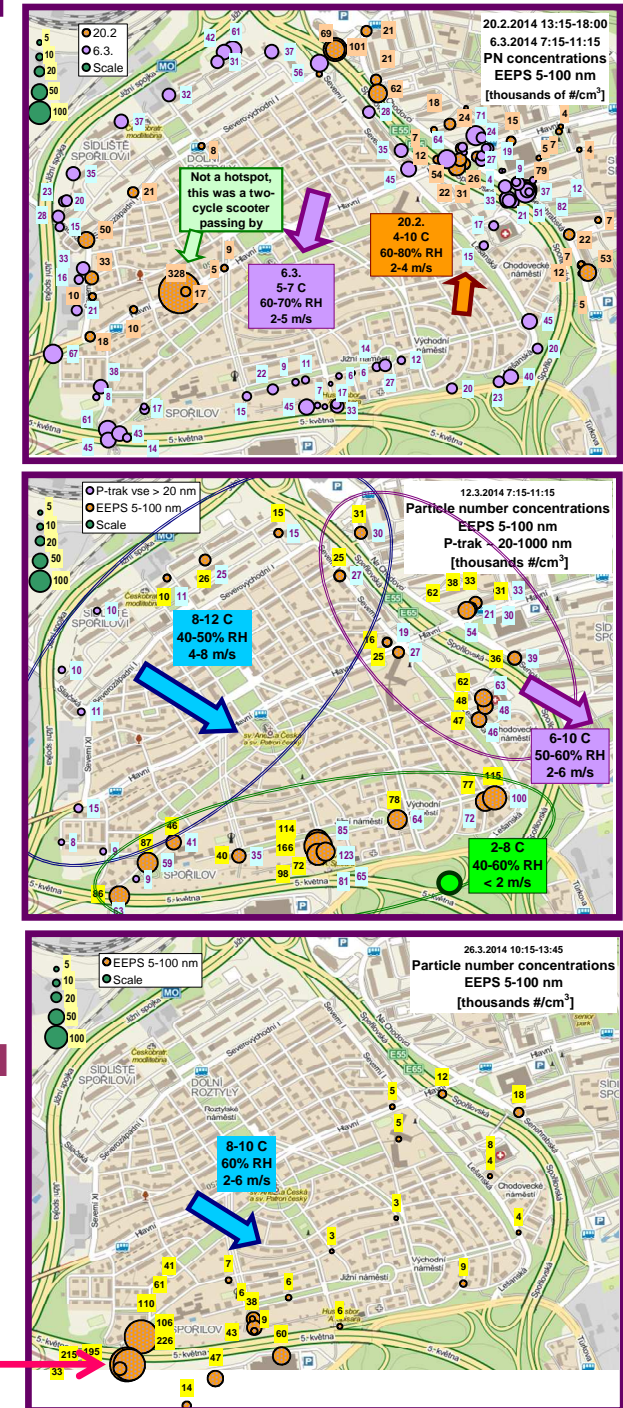
## Above-roadway measurements with an instrumented vehicle

travel from Liberec to and around Prague measurements 1.5 m above roadway

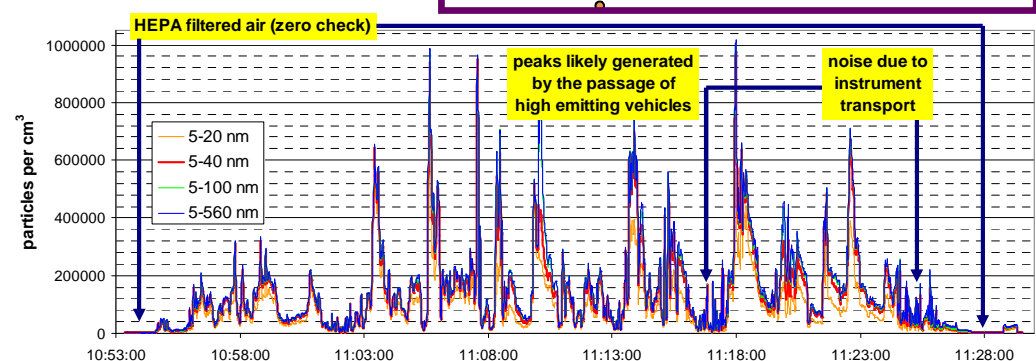
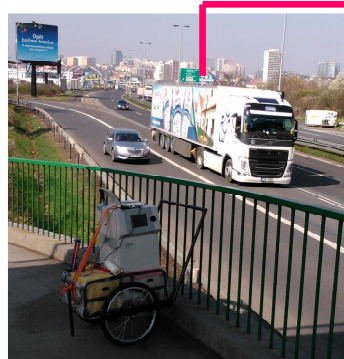


## Spořilov neighborhood "instrumented walking tour"

Quantitative measurements taken during 1-5 minute stops, qualitative assessment during walking.



**"Spořilov hotspot": After low-speed travel through congested area of Prague, heavy trucks accelerate onto a freeway and climb a hill – "reentrainment" of material deposited in the exhaust system.**



## Conclusions

- Local concentration of ultrafine particles and nanoparticle hotspots were assessed by walking around the neighborhood with local citizens with a mobile fast particle electric mobility classifier.
- Concentrations above and near roadways exceed "urban background" (7000 #/cm<sup>3</sup> in Prague) by order(s) of magnitude.

- **Local hotspot found where trucks accelerate out of congested area.**
- **Peaks ~10 nm and in tens of nm observed near urban highways.**
- **Engines are not "black boxes producing emissions" evenly along the way; operating conditions and their history are important and should be considered.**

**Acknowledgments:** The work was funded by the EU LIFE+ program, project MEDETOX - Innovative Methods of Monitoring of Diesel Engine Exhaust Toxicity in Real Urban Traffic (LIFE10 ENV/CZ/651) and by the Czech Science Foundation, project BIOTOX - Mechanisms of toxicity of biofuel particulate emissions (13-01438S). The salary of the first author was funded by EU-EBRD program, project CZ.1.07/2.3.00/30.0034, Support of Research Teams at Czech Technical University in Prague.