

# Shades of Grey

## The relation between optical absorption and thermal properties of Carbon

Tristan Reinisch, AVL List GmbH, Wolfgang Schindler

### “Soot”, elemental Carbon (EC) and Black Carbon (BC)

“Soot” is a weakly defined expression for aerosols consisting mainly of organic carbon (OC) and “elemental” Carbon (EC). Soot in the atmosphere is a product of incomplete combustion of fossil fuels in transportation, heating and power generation” [1]. EC is the most effective light-absorbing species in the visible spectral range, and therefore often called “Black Carbon” (BC).

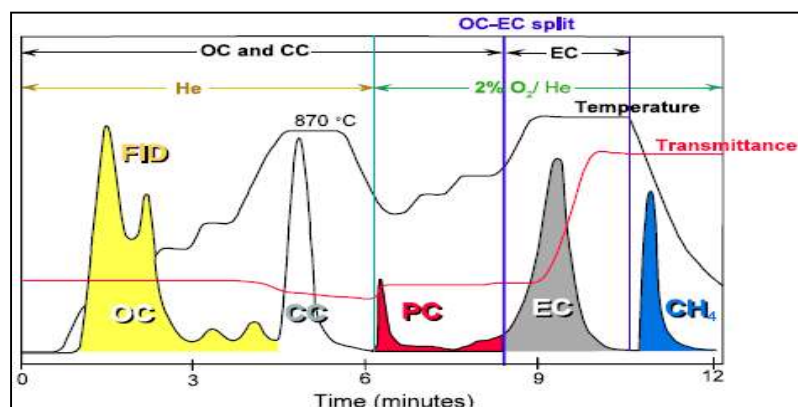
We have investigated some aspects of the relation between EC and BC

### The Measurement of EC and OC

The “evolved gas analysis” (EGA) method analyzes the thermal properties of carbonaceous materials. It is considered a quasi-standard for soot measurements, determining mass concentrations [g/m<sup>3</sup>] of EC and OC.

The evolved CO<sub>2</sub> of a sample, collected on a filter, is measured as a function of temperature. According to e.g. the NIOSH 5040 protocol first in an inert atmosphere (He), to quantify the evaporated OC mass. Next EC is measured in an oxidizing atmosphere (O<sub>2</sub>/He). (For details and the meaning of CC, PC and CH<sub>4</sub> see, e.g. [1], [2]).

For the measurement of EC we used a commercially available “quasi-continuous” OC/EC analyzer from Sunset Labs.

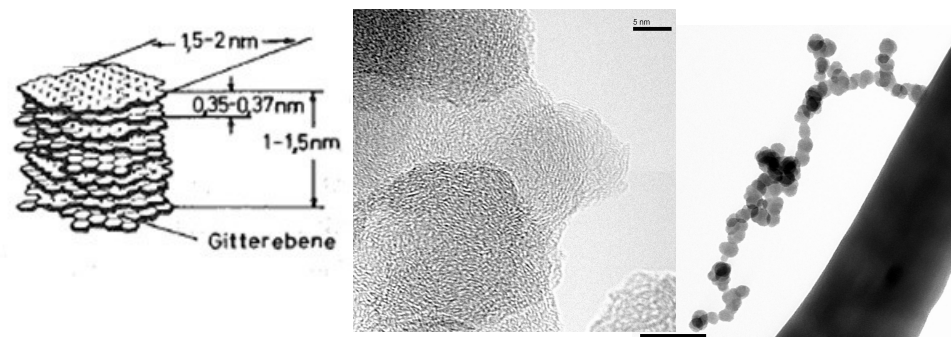


### The Measurement of eBC

The structure of EC in combustion generated particles is highly variable [3], [4], [5]. A high grade of “graphitization”, i.e. *sp*<sup>2</sup> bonds in a regular structure, results in a high mass specific optical absorption coefficient MAC [m<sup>2</sup>/g] [6].

How can the widely used photoacoustic (PA) instruments for BC measurement [7], [8]. display results as mass concentration? By calibrating such instruments with particles of known or fixed MAC an “equivalent” mass concentration, eBC [9], is obtained. The product of measured eBC and the calibration MAC is related to the specific atmospheric warming effect, and therefore the relevant quantity for environmental monitoring.

The MAC for the particles used for the calibration of our PA instrument is 8 ± 1 [m<sup>2</sup>/g] according to literature [6], [10].

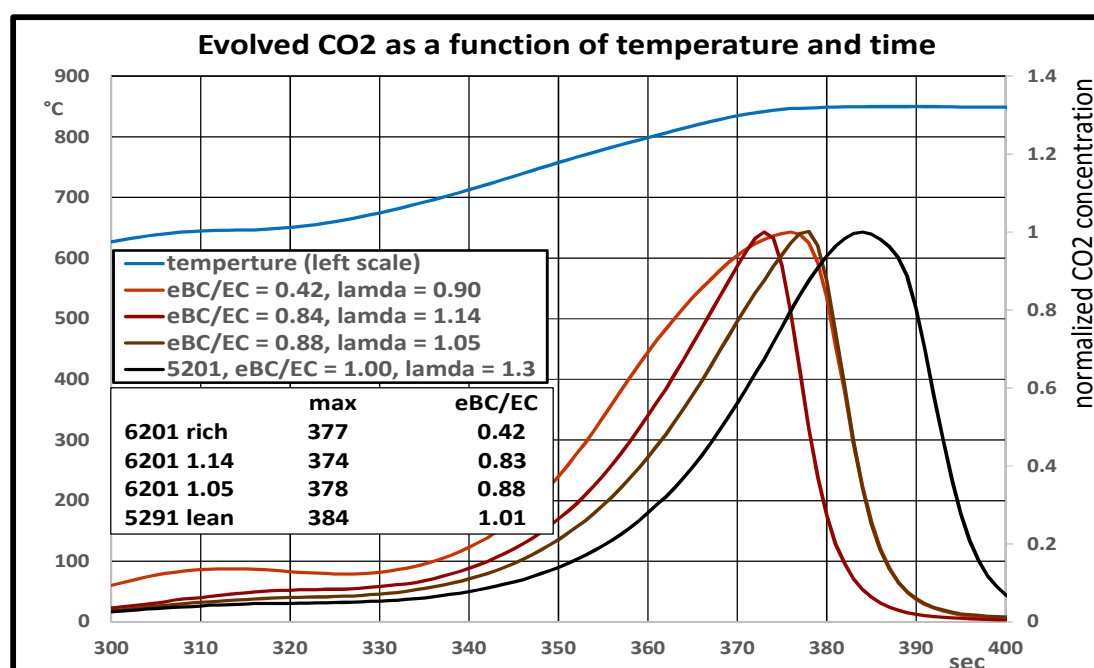


### The relation between EC and eBC

Particles consisting of more than 50% EC were generated in a CAST propane burner, varying the fuel and oxidation air flow [11].

The ratio eBC / EC is directly proportional to the MAC, with eBC / EC = 1 corresponding to the MAC of the calibration particles.

Our experiments showed a trend of increasing oxidizing temperature with increasing eBC / EC ratio, although not necessarily with the peak temperature T<sub>max</sub>.



⇒ More detailed investigations are required

### References

- [1] E. Cavalli et al. Atmos. Meas. Tech. **3** (2010) 79
- [2] D.A. Lack et al. Anal. Bioanal. Chem. **406** (2014) 99
- [3] T. Reinisch et al. Poster, European Aerosol Conference 2013, Prague
- [4] A. Liati et al. Comb. and Flame **160** (2013) 671
- [5] P.R. Buseck et al. Aerosol Sci. & Technol. **48/7** (2014) 777
- [6] T.C. Bond and R.W. Bergstrom, Aerosol Sci. & Technol. **39** (2005) 1
- [7] W. Schindler et al., SAE technical paper series 2004-01-0968
- [8] D.A. Lack, et al., Aerosol Sci. & Technology **46** (2012), 555
- [9] A. Petzold et al. Atmos. Chem. Phys. Discuss. **13** (2013), 9485
- [10] A. Petzold and M.J. Schönlinner, Aerosol Sci. **35** (2004) 421
- [11] R.H. Moore et al., Aerosol Sci. & Technol. **48/5** (2014) 467

### The Shades of Black

