



Effects of Outdoor Smoke Events on Indoor air Quality

J. Pauraite¹, G. Mainelis², S. Kecorius³, A. Minderytė¹, V. Dudoitis¹, K. Plauškaitė¹, J. Ovadnevaite⁴, I. Garbarienė¹, S. Byčenkienė¹

¹SRI Center for Physical Sciences and Technology,

²Rutgers, The State University of New Jersey,

³Leibniz Institute for Tropospheric Research, School of Physics,

⁴Ryan Institute's Centre for Climate & Air Pollution Studies, and Marine Renewable Energy Ireland,
National University of Ireland Galway

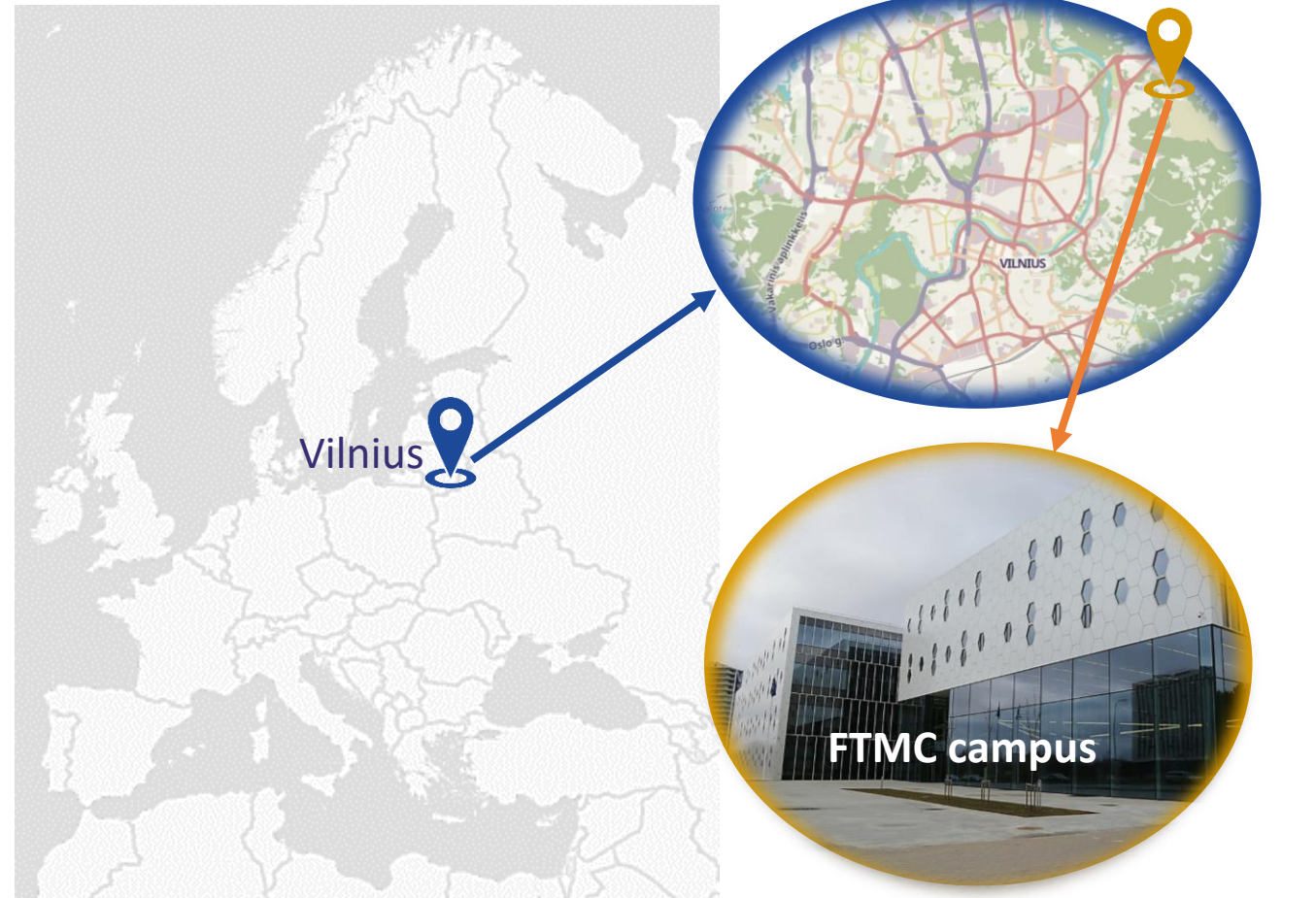
Measurements

Environment: Urban background in Vilnius, Lithuania

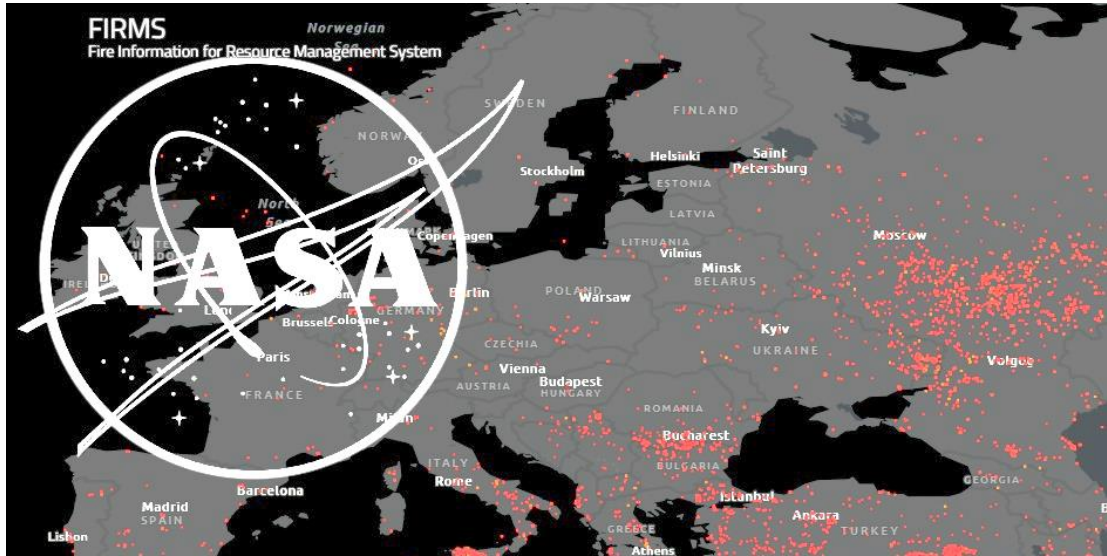
Dates: 30th September – 6th October, 2020

Instrumentation: Aethalometer (AE31), Nephelometer, APS

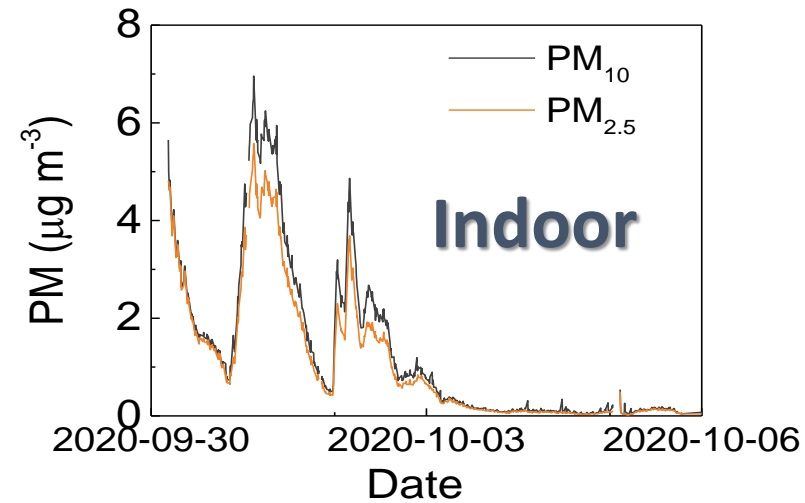
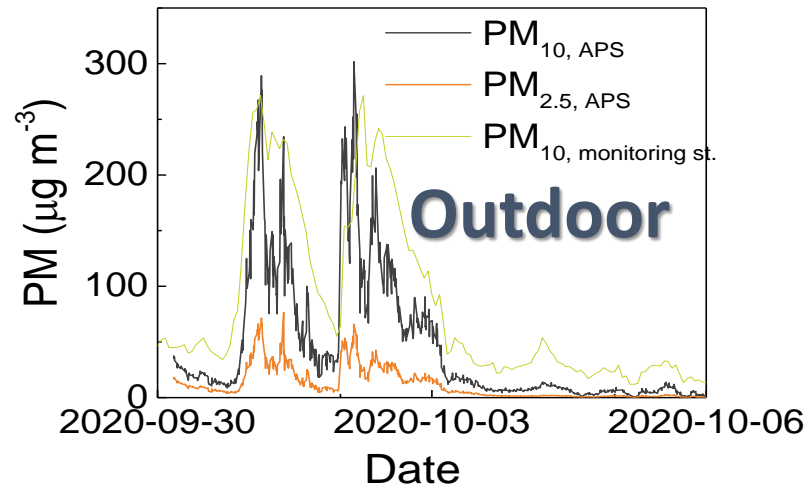
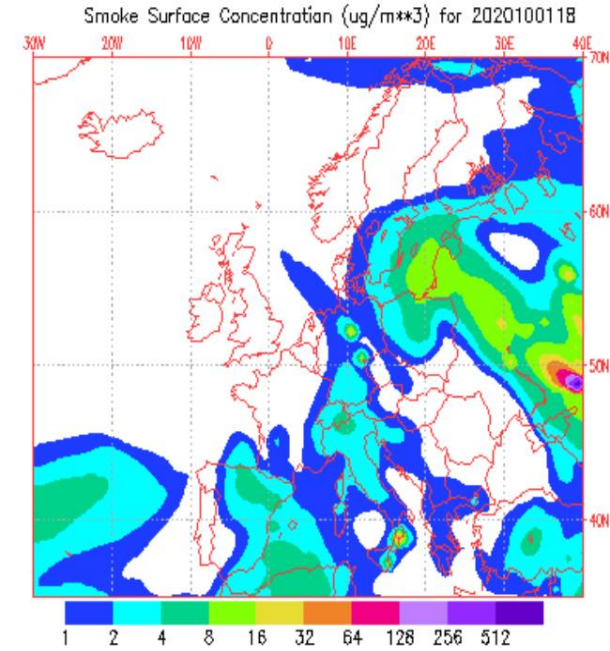
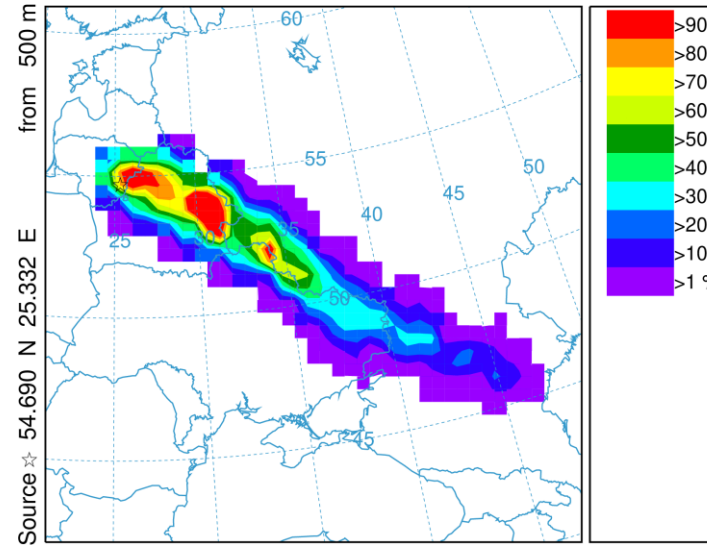
Air supply system: G4 pre-filters and F7 filters



Smoke event



NOAA HYSPLIT MODEL - TRAJECTORY FREQUENCY
endpts per grid sq./# trajectories (%) 0 m and 99999 m
Integrated from 1200 01 Oct to 1800 28 Sep 20 (UTC) [backward]
Freq Calculation started at 0000 00 00 (UTC)

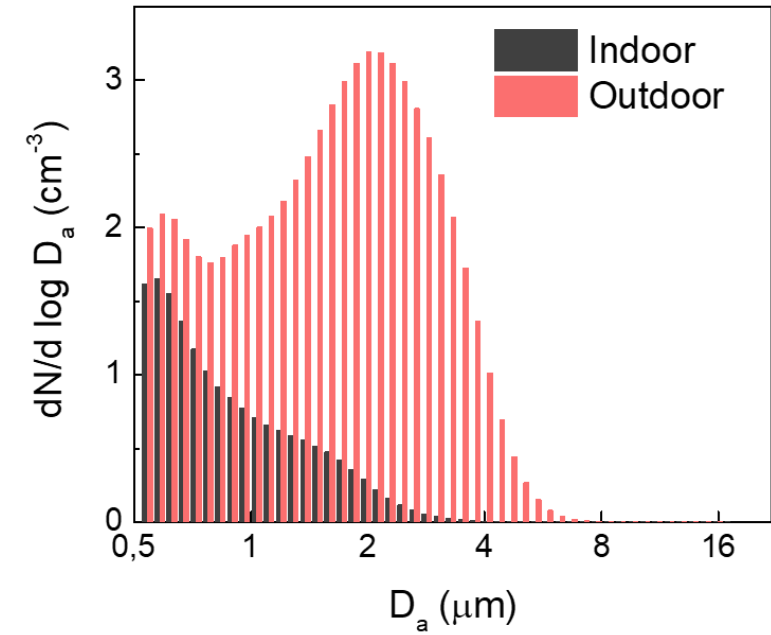
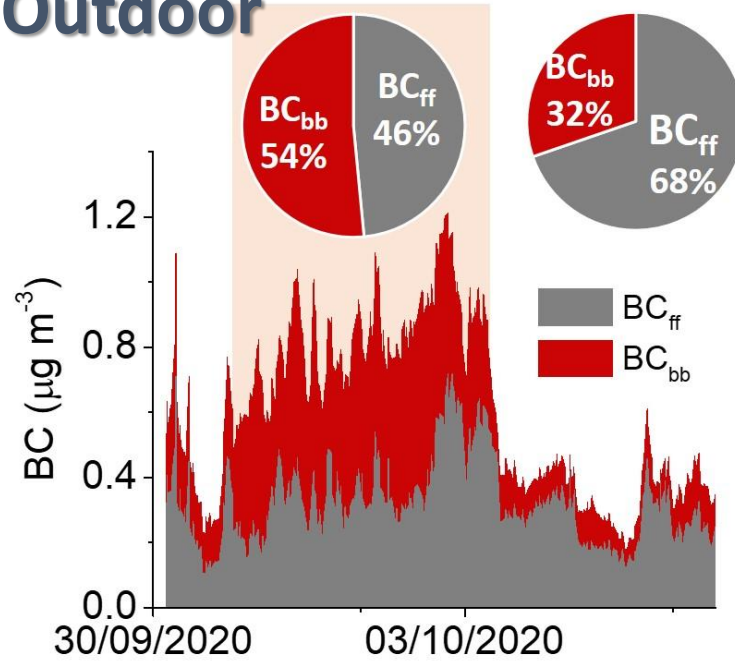


Sources:

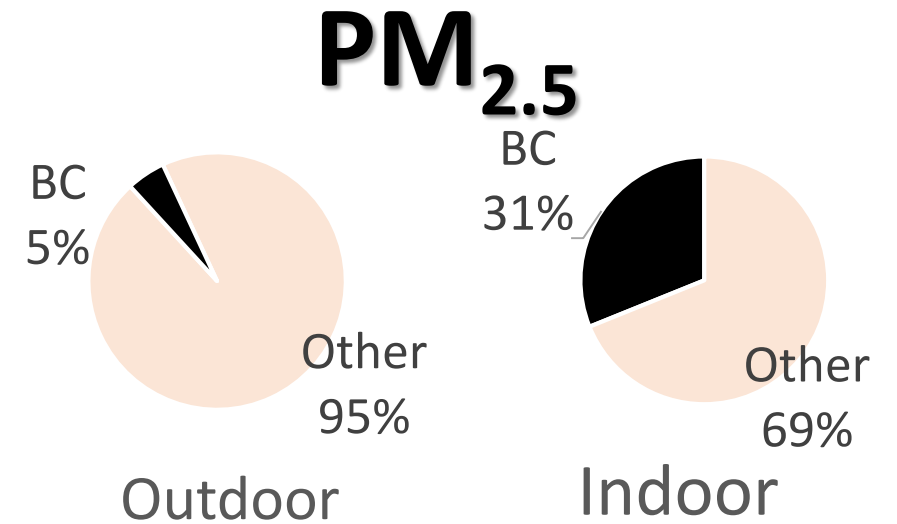
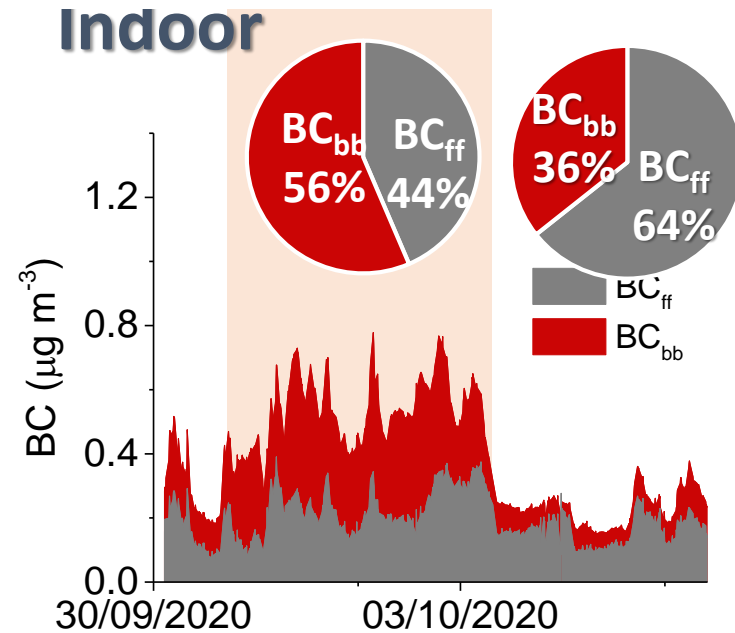
- FIRMS
- NOAA Hysplit
- NAAPS

Impact on indoor air

Outdoor



Indoor



Acknowledgments

This research was funded by a grant (No. S-MIP-20-28) from the Research Council of Lithuania.

Thank you for attention